



Thursday, December 3rd, 2020
Start Time : 9.30am





Topics

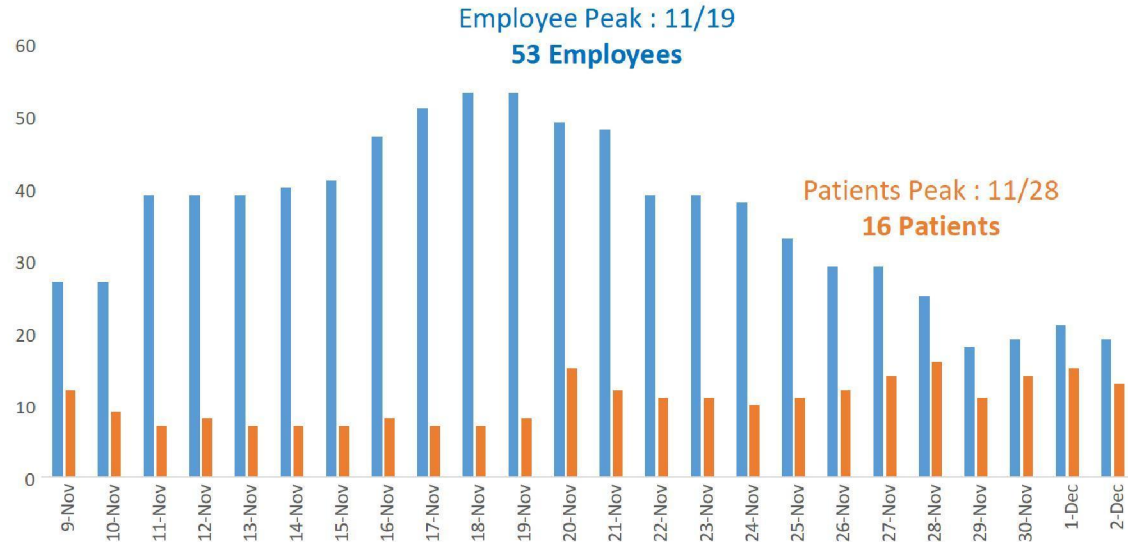
- Current situation
- New Developments
- Procedures, Protocols and Reminders



Current COVID-19 Situation

Employees
16 ACTIVE
81 Recovered

Patients
13 ACTIVE
COVID Department : 11
Intensive Care : 2





Elective Care

Upscaling (& Downscaling Backup plan)

- As of 12/2 : 31 Beds available
- Planning Department and General Managers (Algemeen Manager) will start implementation plan





Developments

- 13 VWS General Nurses for Emergency
- Total 37 AMI (US Team)
- Hospitainer (Setup Dec. 4th) for COVID-19 Patients Triage





STRICTY PROHIBITED



Release of Confidential Information
about CMC or Patients is strictly prohibited
The only authorized by the Communication Department







Curaçao Medical Center


ATENSHON!




2M




Protokòl di Covid-19
Covid-19 protocols



Tur personal mester bisti "mondkapje"
All staff must wear a mouth mask

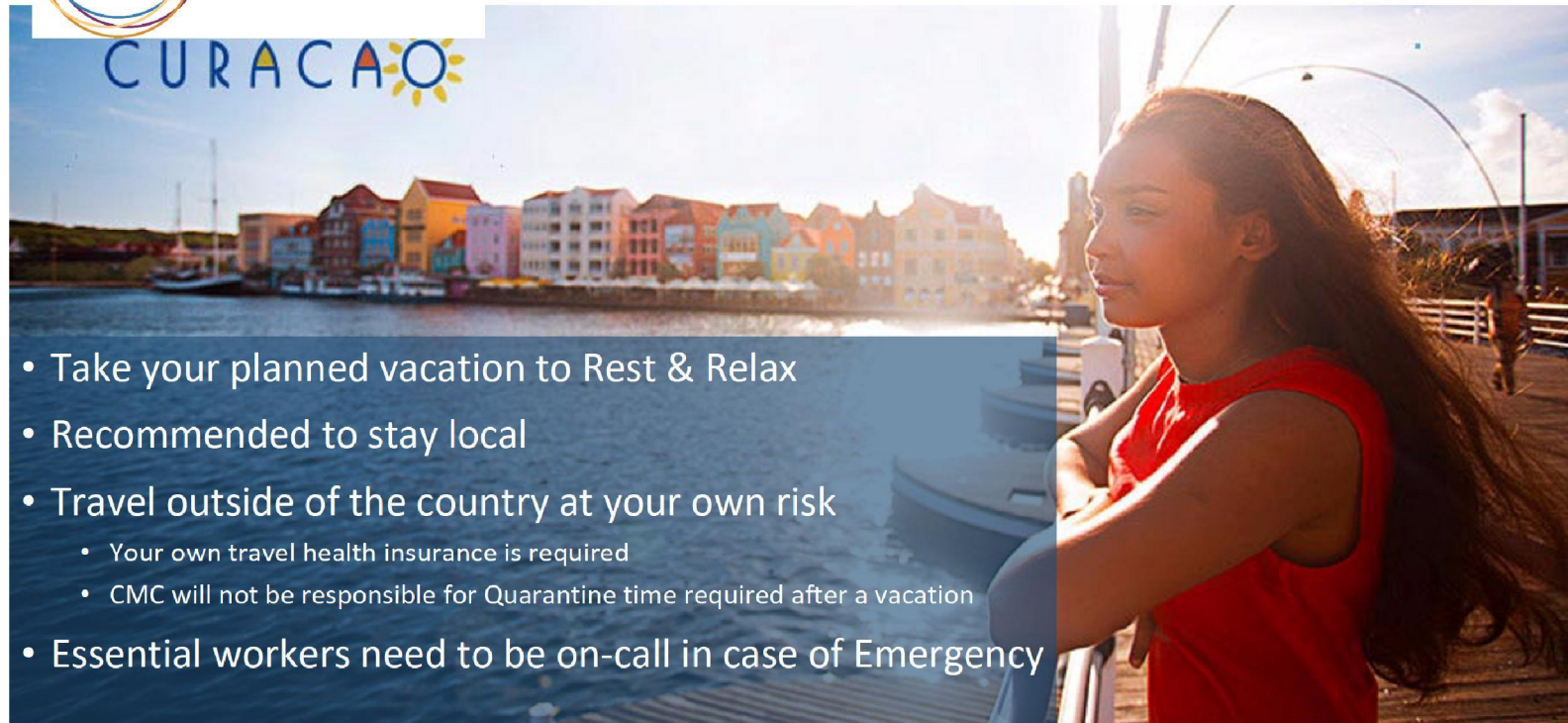


Curaçao Medical Center, J.H.J. Harkelbergweg 11n, Willemstad, Curaçao
E info@cmc.cw T +5999 745 0000 / +5999 650 4300 W www.cmc.cw

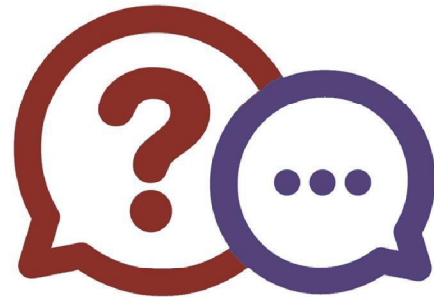
Sirbi ku amor 



Vacation



- Take your planned vacation to Rest & Relax
- Recommended to stay local
- Travel outside of the country at your own risk
 - Your own travel health insurance is required
 - CMC will not be responsible for Quarantine time required after a vacation
- Essential workers need to be on-call in case of Emergency



Questions ?

Type your questions in “Q&A”



Closing Remarks

Next COVID-19 Update
Thursday, December 10th
9.30am

